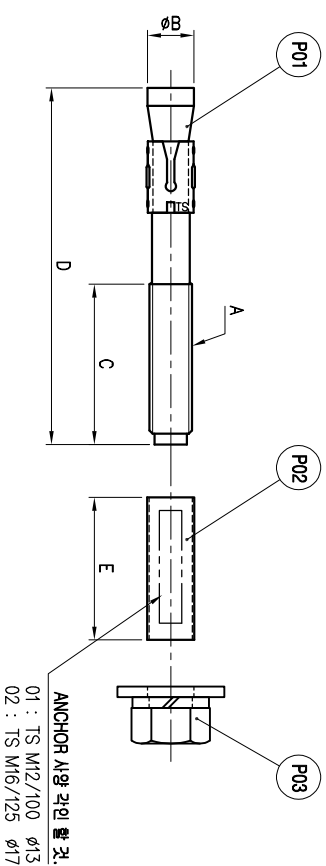
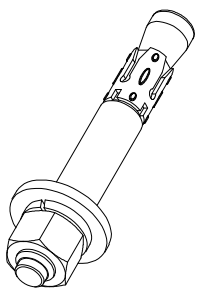


NO.	DATE	REVISION & DESCRIPTION	SIGNATURE
△	-	-	REVIEWED
△	-	-	CHECKED



No.	A	ØB	C	D	E	CONCRETE HOLE	MATERIAL	FINISH	REMARK
01	M12	Ø13	45	100	40	Ø13	SS400	Fe+Zn	
02	M16	Ø17	55	125	54	Ø17	SS400	Fe+Zn	

구분	구분	구분	구분	구분	구분	구분	구분	구분	구분
1~4	4.1	4.2	4.3	4.4	4.5	4.6	4.7	4.8	4.9
5~16	4.1	4.2	4.3	4.4	4.5	4.6	4.7	4.8	4.9
17~63	4.1	4.2	4.3	4.4	4.5	4.6	4.7	4.8	4.9
64~250	4.1	4.2	4.3	4.4	4.5	4.6	4.7	4.8	4.9
251~1000	4.1	4.2	4.3	4.4	4.5	4.6	4.7	4.8	4.9
1001~2000	4.1	4.2	4.3	4.4	4.5	4.6	4.7	4.8	4.9

NO.	PARTS NAME	QUANTITY	UNIT	REMARKS
P03	P/W, S/W, NUT	EA	1	-
P02	PIPE	EA	1	TABLE 참조
P01	ANCHOR BOLT	EA	1	TABLE 참조

NO.	DESIGNED	CHECKED	APPROVED	DATE	SCALE	PROJECTION
2022.07.29	SH.LEE	S.T.OH	Y.M.JEUN	2022.07.29	1 : 1.5	1

MODEL	TITLE	DWG. NO.
-	ANCHOR BOLT (M12/M16 PIPE Type)	TS-WA-0001

**NOTE**  
 1. 표면처리 : 유색 크로메이트 처리 할 것. (노란색).  
 2. 본 제품은 콘크리트 구조에 사용 할 것.